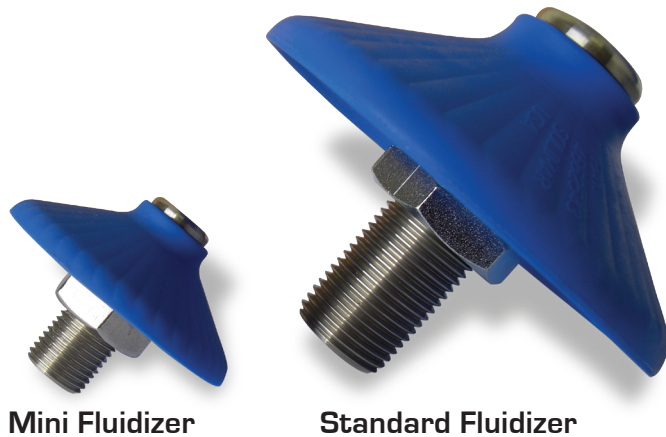


SILO FLUIDIZER MINI DISK



Mini Fluidizer

Standard Fluidizer

SOLIMAR'S MINI FLUIDIZING DISK

All the features of our standard disk to prevent bridging, rat holing and compacting in tight curvature situations where standard disks will not fit.

Perfect for:

- Tight Curvature Chambers – 4" (100 mm) diameter
- Chutes, Pipes, Small Hoppers
- Corner Hang-ups

MINI FLUIDIZING DISK KEEPS MATERIAL MOVING IN TIGHT CURVATURES

Aeration loosens up the product allowing it to flow. Minimum back pressure puts air energy where it is needed the most – into the product chamber.

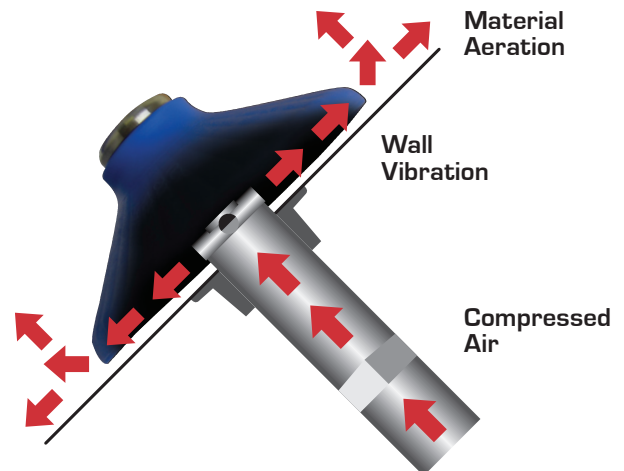
Directional Air Flow. Air is forced along the chamber wall, freeing up product and keeping it moving.

Gentle Vibration keeps the product flowing, preventing compaction or plugging.

No Airline Plugging. Seals tightly against the chamber wall and prevents airline plugging.

Robust Design. Will not tear, pick up moisture & is unaffected by temperatures up to 450°F/230°C.

Material Compatible. Available in food grade and FDA approved blue or white silicone rubber, or high temperature orange.



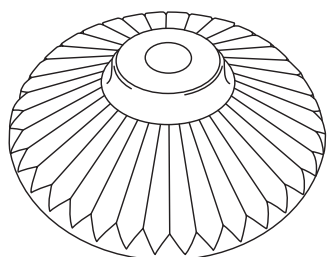
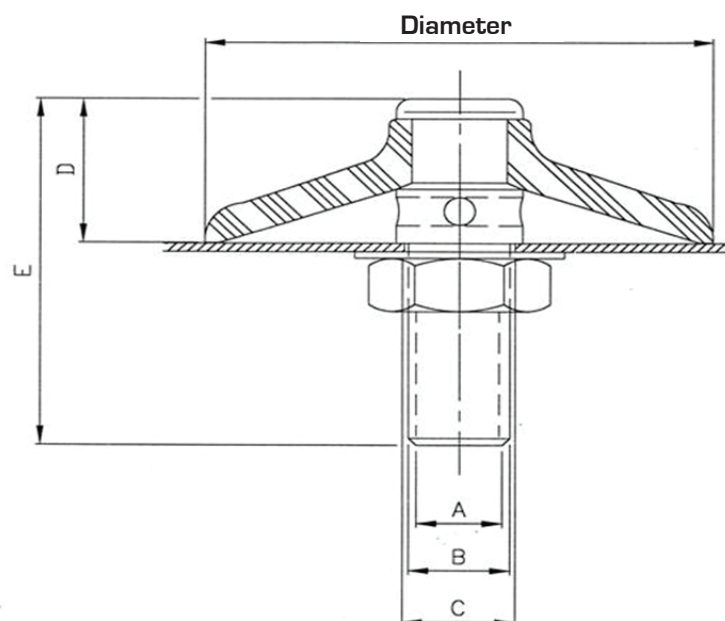
Hopper cutaway shows Fluidizer in use

MINI SILO FLUIDIZER TECHNICAL DATA

MODEL	DISK DIAMETER	A	B	C	D	E	AIRLINE OPTIONS
Mini 48XX	2"	1/8" NPT	NA	1/2" [13 mm]	9/16" [14 mm]	1 1/2" [38 mm]	1/4" Tubing [6 mm]
Standard 43XX	4"	1/4" NPT	1/2" NPT	7/8" [22 mm]	1 3/16" [30 mm]	3" [76 mm]	3/8" - 1/2" Tubing [10-13 mm]



Multiple disk options, including silicone rubber food grade/FDA approved (blue or white), high temperature (orange), EPDM (black) or metal detectable (grey).



**INSIST ON GENUINE
SOLIMAR DISKS WITH
THE TRADEMARKED
RADIAL RIDGE DESIGN**

MODEL	AIRFLOW REQUIREMENTS
Mini	Capacity 2 - 3 CFM @ 20 - 30 PSI (3.5 - 5m ³ /h @ 1 - 2 bar)
Standard	Capacity 10 - 20 CFM @ 20 - 30 PSI (15 - 30m ³ /h @ 1 - 2 bar)

Engineering Assistance. Fax or e-mail a sketch or drawing of your chamber, along with a description of your bulk material and we will provide a recommended number and placement of fluidizers for your application the next day.