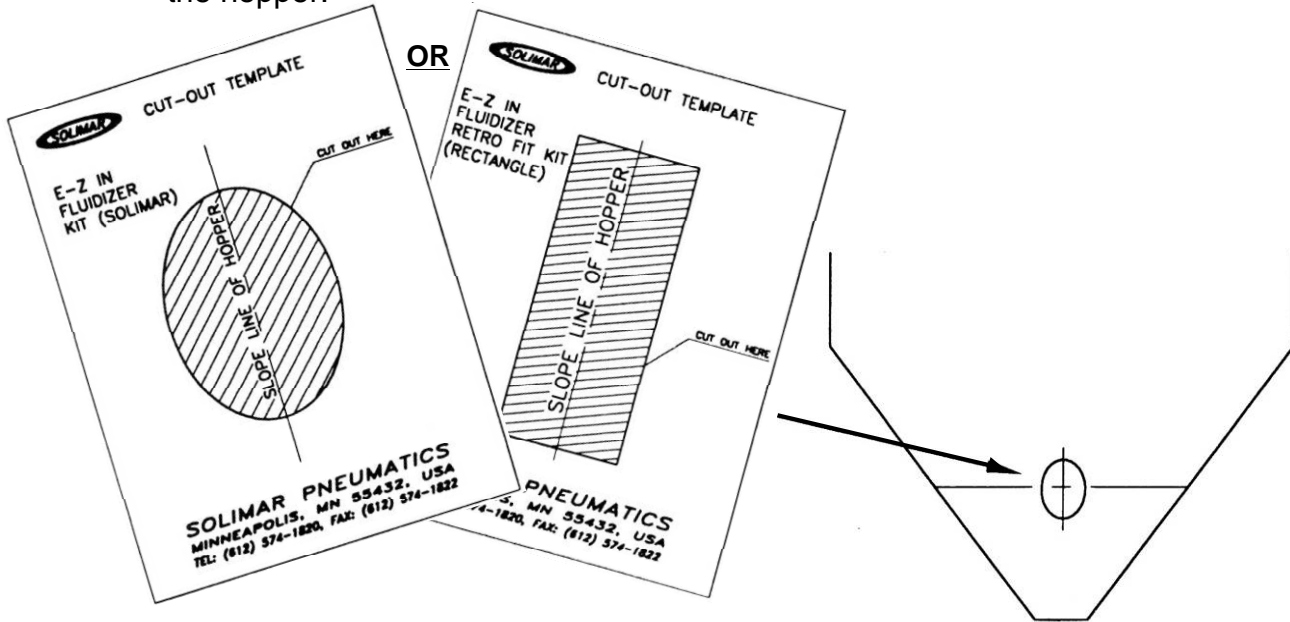
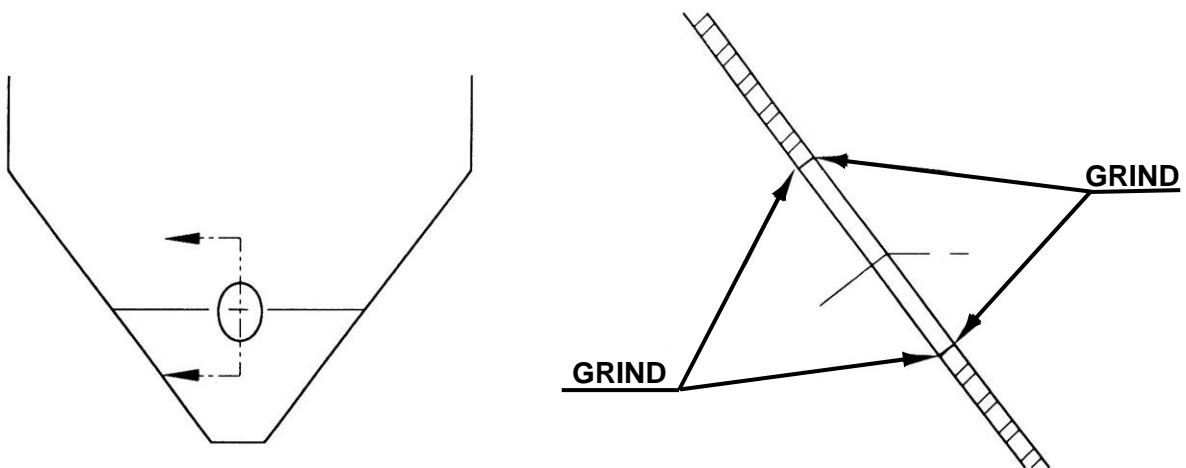


**INSTALLATION INSTRUCTIONS – EZ-IN FLUIDIZER**

1. Using one of the cut out templates provided by Solimar, trace the pattern on the hopper.

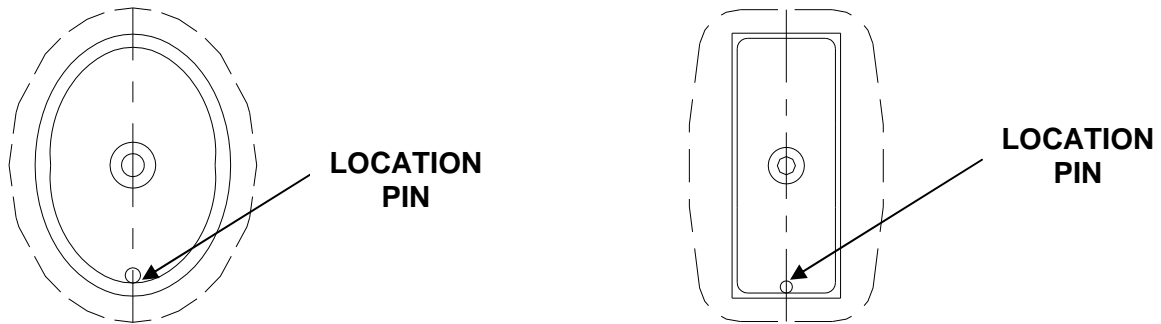


2. Flame cut traced pattern with cutting torch or other means.
3. Grind all surfaces of the cut opening – **the inside of the hopper wall must be smooth and free of any burrs or slag.**

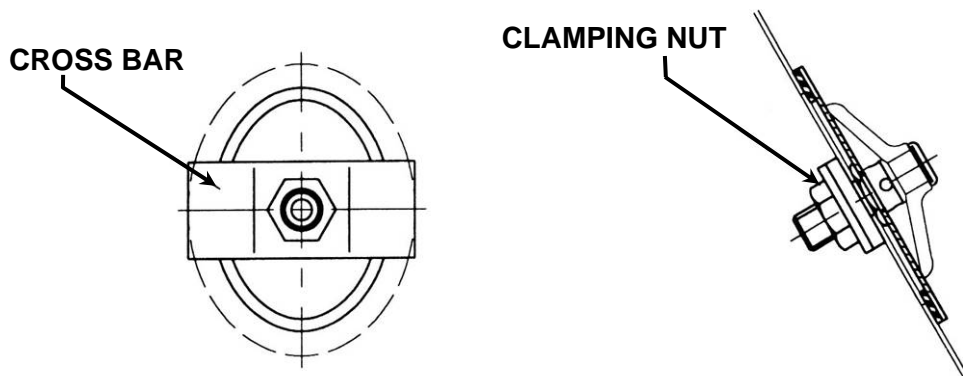




4. Attach the fluidizer assembly to the plate using the washer and mounting nut. Insert Solimar EZ-In plate with fluidizer assembly, making sure the location pin is resting at the bottom of the opening.



5. On the outside of the hopper, attach cross bar to the fluidizer plate assembly with the clamping nut.



6. Torque clamping nut to 20 ft. lbs (27 N ·m).
7. Attach the air supply line to the fluidizer.

