

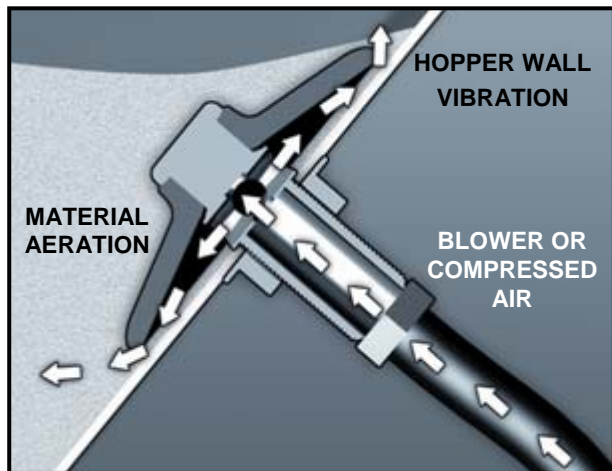


Silo Fluidizer

www.solimarpneumatics.com



Solimar's patented fluidizer is used in over 120 different material applications in 60 countries around the world.



Hopper cutaway showing action of fluidizer in use. Solimar designed fluidizers are perfect for any silo.

Keep Dry Bulk Materials Moving

Solimar Pneumatics offer a family of silo fluidizers that promote the discharge of dry products from storage silos, dust collectors, weigh bins and IBC's. Solimar fluidizers enable a uniform flow of most dry bulk materials through aeration and hopper wall vibration that helps prevent bridging, rat holing and compacting.

Solimar has over 40 years of experience in pneumatic systems and components for dry bulk handling. Solimar provides engineered solutions to the most difficult material flow problems.

Why Solimar Silo Fluidizers work where others have failed

Aeration loosens up the product allowing it to flow easier. Minimum back pressure puts air energy where it is needed the most – in the silo.

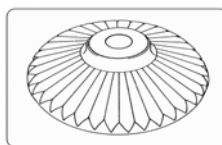
Directional Air Flow. The fluidizer disk forces air to move along the bin wall freeing up product and assuring good clean-out.

Gentle Vibration keeps the product flowing without allowing it to compact or plug.

No Airline Plugging. Patented disk seals tightly against the silo wall and prevents airline plugging.

Robust Design. The disk will not tear, pick up moisture & is unaffected by temperatures up to 350° F (170° C).

Material Compatible. Silicone rubber standard in blue or white (both food grade/FDA approved), black or white EPDM or orange high temperature up to 450° F (230° C).



Insist on genuine Solimar disks with the trademarked Radial Ridge Design

Solimar Pneumatics

Minneapolis, MN 55432 USA

1 800 233.7109

Tel: 763 574.1820 / Fax: 763 574.1822

e-mail: solimar@solimarpne.com

Silo Fluidizer – Technical Data

Series 4300: Capacity 10 – 20 CFM @ 20 – 30 PSI (15 – 30m³/h @ 1-2 bar)

Model	Disk	Stem	A	B	C	D	E	Airline Options
4300	Blue	Mild Steel	1/4" NPT	1/2" NPT	7/8" (22mm)	1 3/16" (30mm)	3" (76mm)	3/8" – 1/2" (10 - 13mm) Tubing
4301	White							
4302	Blue	Aluminum						
4303	White							
4304	Blue	Stainless						
4305	White							

Series 4400: Capacity 25 – 40 CFM @ 10 – 20 PSI (40 – 70m³/h @ 0.7-1.5 bar)

Model	Disk	Stem	A	B	C	D	E	Airline Options
4400	Blue	Mild Steel	1/2" NPT or BSTPT	3/4" NPT	1 1/16" (27mm)	1 1/4" (32mm)	3 1/16" (78mm)	1/2" – 3/4" (13 - 19mm) Tubing or Hose
4401	White							
4402	Blue	Aluminum						
4403	White							
4404	Blue	Stainless						
4405	White							

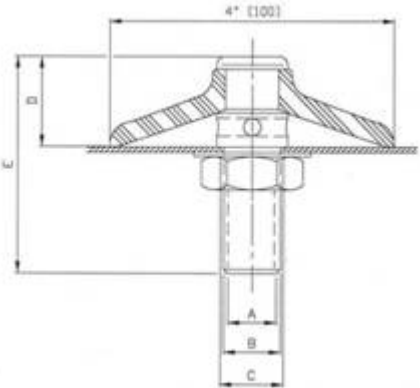
Series 4500: Capacity 30 – 50 CFM @ 5 – 10 PSI (50 – 85m³/h @ 0.3-0.7 bar)

Model	Disk	Stem	A	B	C	D	E	Airline Options
4500	Blue	Mild Steel	3/4" NPT or BSTPT	1" NPT	1 3/8" (35mm)	1 1/4" (32mm)	3 1/4" (83mm)	3/4" – 1" (19 - 25mm) Hose
4501	White							
4502	Blue	Aluminum						
4503	White							
4504	Blue	Stainless						
4505	White							

Versatility. Numerous combinations of stems, fittings and airlines to fit your application. Solimar Fluidizers can be used with high pressure / low volume compressed air or with low pressure / high volume blower air.

Engineering Assistance. Fax or e-mail a sketch or drawing of your bin, along with a description of your bulk material and we will provide a recommended number and placement of fluidizers for your application the next day.

Easy installation. Fits both conical and square bins, EZ-In (Easy-In) kits also available for installation without getting inside the bin.



08/08



1 800 233.7109

Tel: 763 574.1820 / Fax: 763 574.1822

e-mail: solimar@solimarpne.com