

SOLIMAR

Since 1985

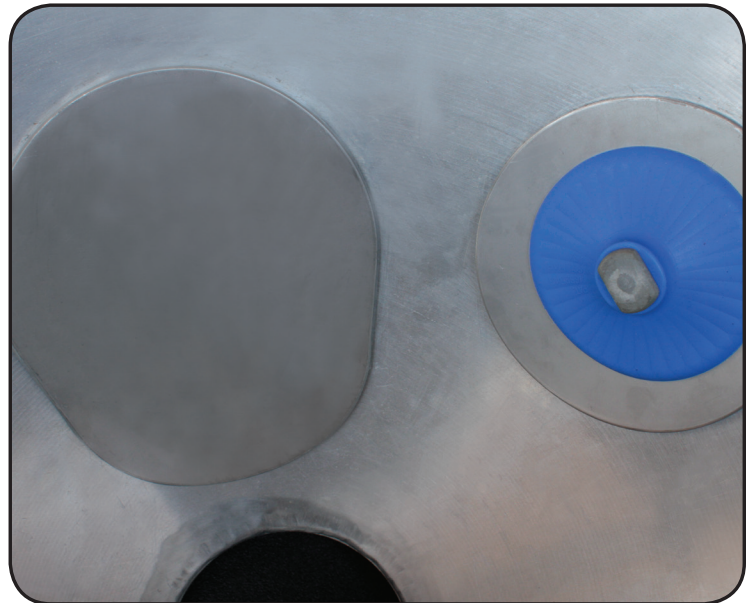
E-Z Out Hopper Access Door

EASY TO INSTALL – EASY TO USE

Pneumatic Trailers, Storage Silos, Dust Collectors and Process Equipment

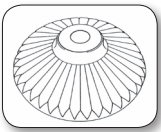


E-Z Out Access Door opening.



E-Z Out Access Door installed.

Stainless - ideal for food, chemicals & plastics. Molded food grade gasket - low profile, minimum product hang-up. Standard tee-handle - easy to tighten or open - other closure options available. Two models - flat for square hoppers, curved for conical hoppers. Limited to 14.7 PSI operation.



Insist on genuine Solimar disks with the trademarked Radial Ridge Design.



Solimar Pneumatics | Minneapolis, MN 55432 USA | 1.800.233.7109 | P: 763.574.1820

F: 763.574.1822 | email: solimar@solimarpne.com | www.solimarpneumatics.com

Solimar, Solimar-USA and the Radial Ridge Design are trademarks of Solimar Pneumatics

E-Z Out Hopper Access Door

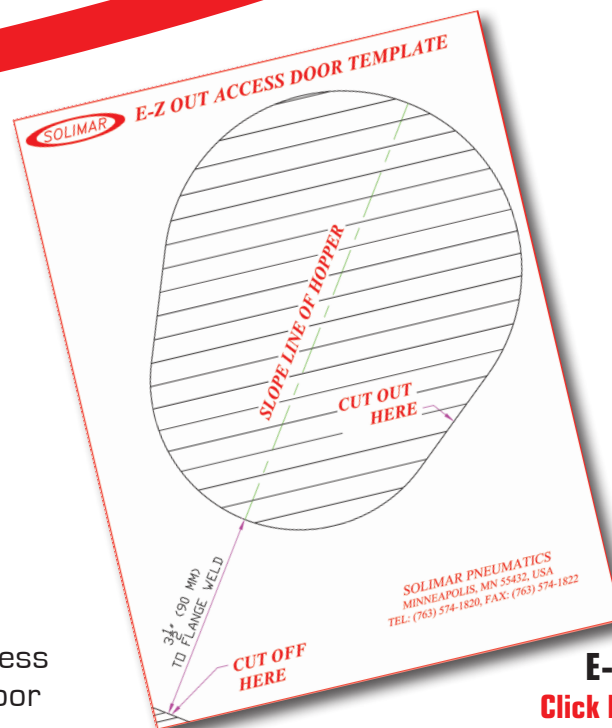
APPLICATIONS

Trailers with conical hoppers. The Easy Out Access Door opening is located near the bottom outlet and opposite the 3-port manifold so the Access Door does not interfere with the aeration hoses. The lower portion of the opening is located approximately 3 ½ " (90 MM) from the bottom outlet flange.

Other conical hoppers. The Easy Out Access Door can be located where the Access Door fits the outside contour of the hopper.

Square hoppers with flat sides. The door can be located in any convenient place.

CAUTION: DO NOT OPEN DOOR WHILE TANK IS LOADED OR UNDER PRESSURE



E-Z Out Template
[Click here to download](#)



To locate the Access Door properly –

1. Cut off the lower left corner of the paper template and cut out the shaded area in the middle of the door opening on the template drawing.
2. Tape it to the hopper and trace the opening with the larger portion up.
3. Remove the template and cut the hole in the hopper with a plasma arc (or sabre saw). The reinforcement channel on the exterior of the door will locate the door – **do not make the opening too big.**
4. Deburr the edges.
5. Fit the stainless steel yoke which extends on each side of the Access Door over the threaded steel bolt projecting from the back of the door. The yoke is held in place by a tee-handle.